



6/42 Ewos Parade Cronulla NSW

1 1 1

Ideally located on the 2nd floor of a quality security building, this fantastic apartment enjoys a sun drenched north aspect and is just footsteps away from Cronulla's famous attractions.

Price : \$ 830,000

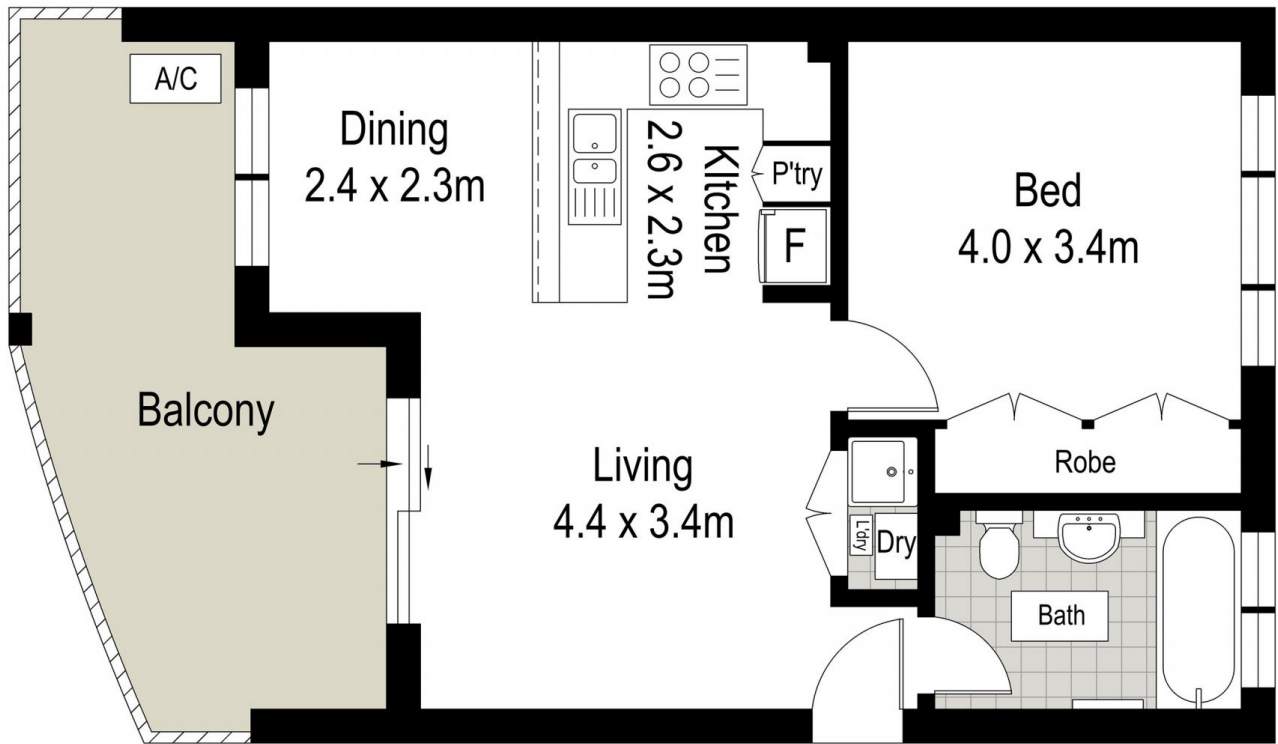
View : <https://www.chrisburke.com.au/sale/nsw/sutherland/cronulla/residential/apartment/7915853>

Features are:

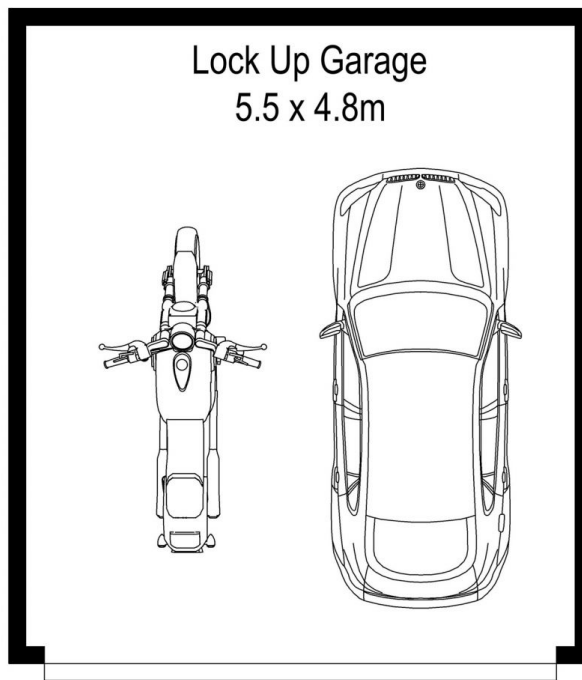
- Spacious north facing entertaining balcony
- Well proportioned bedroom with built-in robe
- Separate lounge/dining space
- Full size separate bathroom
- Kitchen equipped with stone bench tops and dishwasher
- Split system air conditioning
- Oversized lock up garage approximately 26sqm
- Walking distance to Shelly Park, the Esplanade, shops, beaches and transport
- Strata Levies \$869 per quarter (approximate)



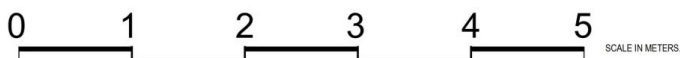
David Kennedy
0295441111



LEVEL TWO ↑



BASEMENT LEVEL



DISCLAIMER: THIS IS FOR ILLUSTRATIVE PURPOSES ONLY, ALL DIMENSIONS ARE APPROXIMATE AND IT DOES NOT CONSTITUTE PART OF ANY LEGAL DOCUMENTS.

6 / 42 Ewos Parade, Cronulla

