



**74/8-12 Wandella Road Miranda NSW**

2 2 1

Situated in one of Miranda's premier complexes, this spacious north facing apartment is just a minute's walk to all of Miranda's amenities including Westfield, Parkside Plaza and Miranda train station. Features are:

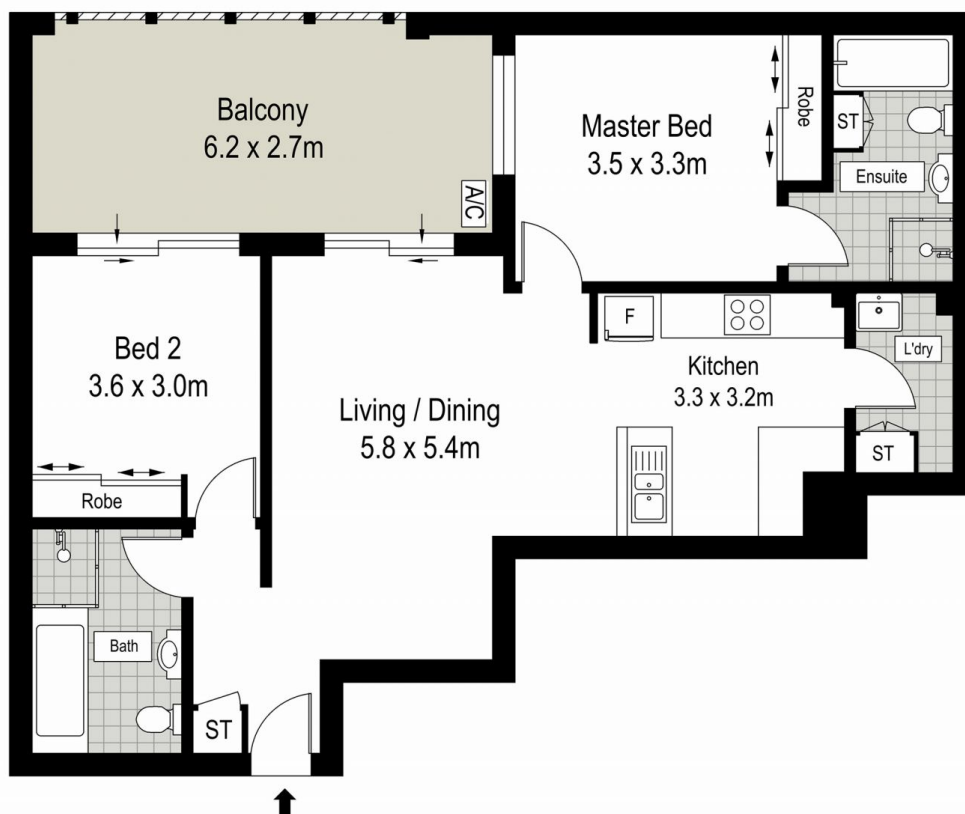
- Spacious living and dining
- Beautiful gas kitchen with stainless steel and granite finishes
- Large main bedroom with built-in robe and modern ensuite
- Second bedroom with built-in robe
- Ensuite and main bathrooms with separate bath and shower
- Handy internal laundry
- Spacious covered balcony ideal for entertaining
- Security car space with lift access
- Council Rates \$367 per quarter (approximate)
- Water Rates \$154 per quarter (approximate)

**Price** : \$ 807,000

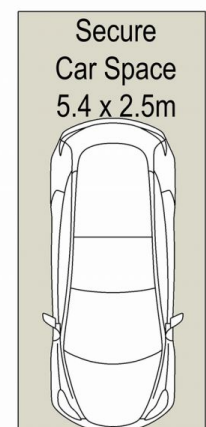
**View** : <https://www.chrisburke.com.au/sale/nsw/sutherland/miranda/residential/apartment/7851106>



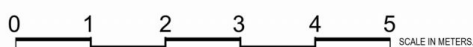
**David Kennedy**  
**0295441111**



**LEVEL FOUR**



**BASEMENT ONE**



DISCLAIMER: THIS IS FOR ILLUSTRATIVE PURPOSES ONLY, ALL DIMENSIONS ARE APPROXIMATE AND IT DOES NOT CONSTITUTE PART OF ANY LEGAL DOCUMENTS.



74 / 8-12 Wandella Road, Miranda